



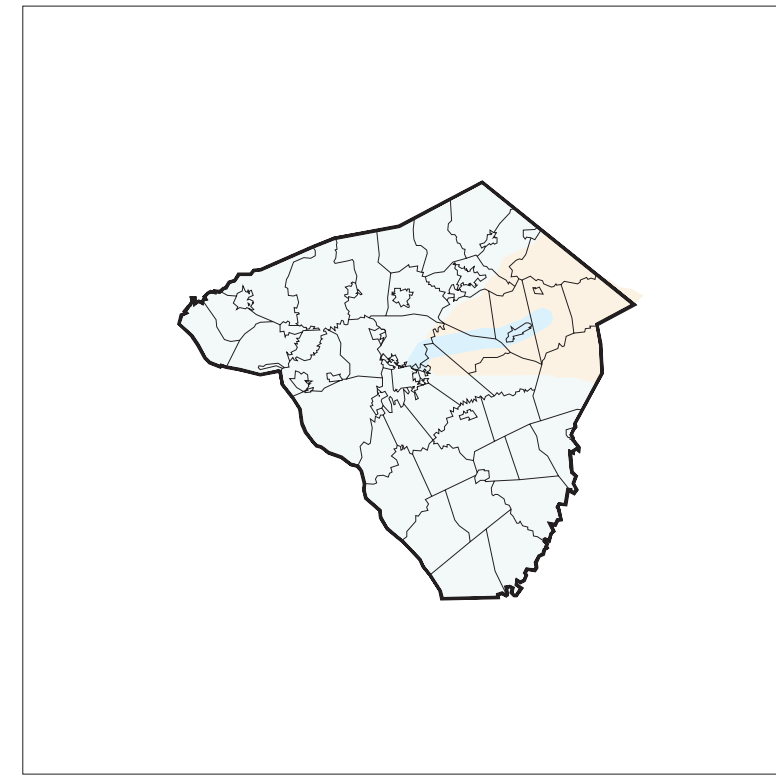


PA 23 PROJECT AND STUDY AREAS

-  PA 23 Subcorridor Project Area - 1.6 Miles Wide on Both Sides of Existing PA Road Centerline - Transportation/Land Use Solutions
-  PA 23 Corridor Study Area - Land Use/Transportation Solutions
-  Municipal Boundaries
-  Road



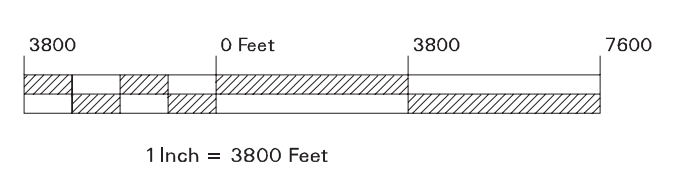
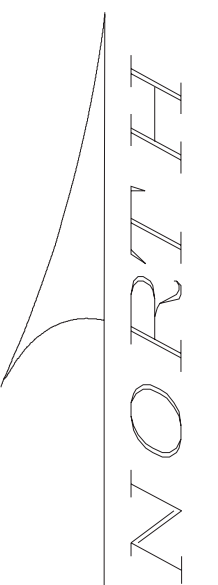
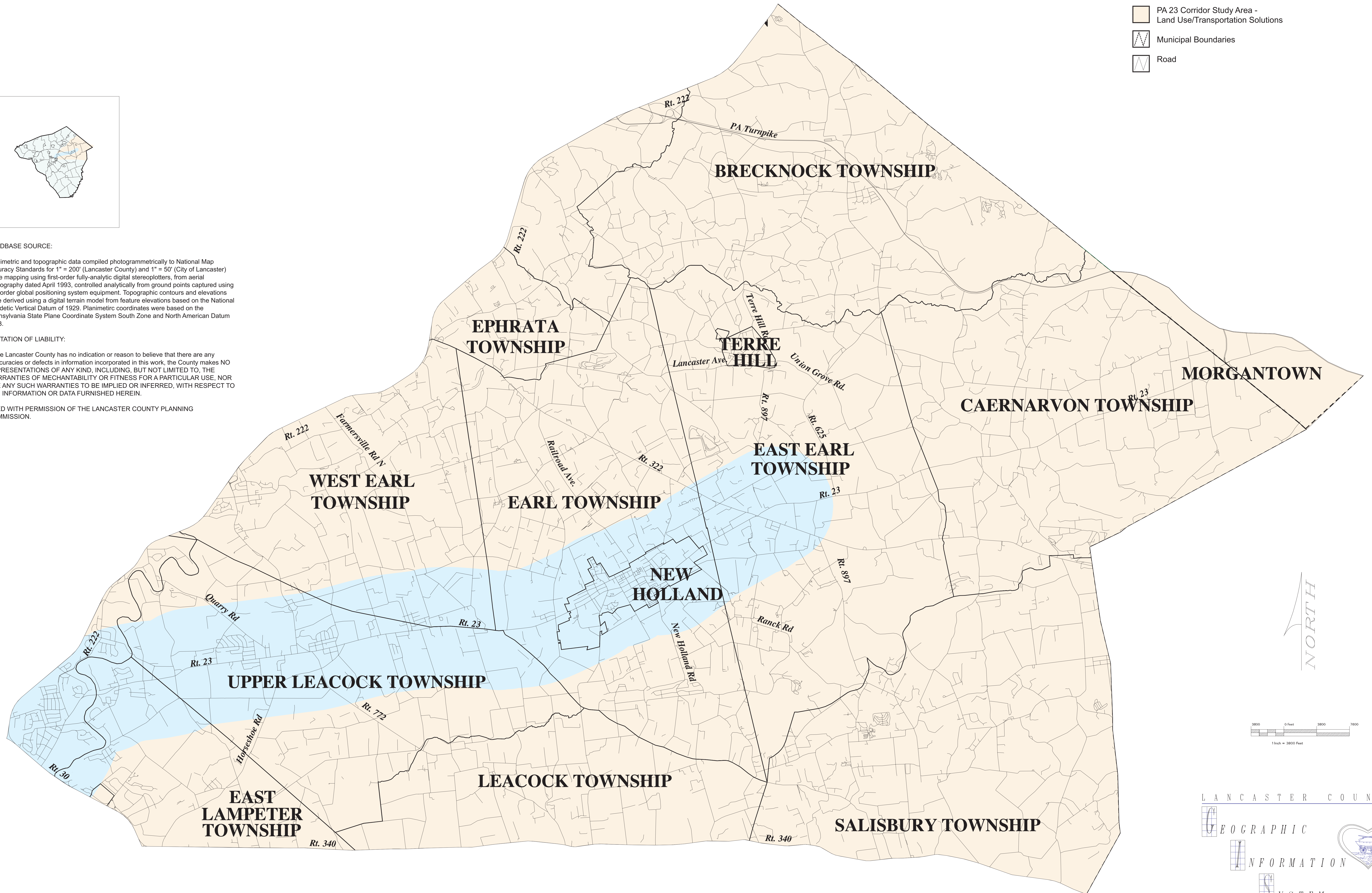
LANDBASE SOURCE:

Planimetric and topographic data compiled photogrammetrically to National Map Accuracy Standards for 1" = 200' (Lancaster County) and 1" = 50' (City of Lancaster) scale mapping using first-order fully-analytic digital stereoplotters, from aerial photography dated April 1993, controlled analytically from ground points captured using first-order global positioning system equipment. Topographic contours and elevations were derived using a digital terrain model from feature elevations based on the National Geodetic Vertical Datum of 1929. Planimetric coordinates were based on the Pennsylvania State Plane Coordinate System South Zone and North American Datum 1983.

LIMITATION OF LIABILITY:

While Lancaster County has no indication or reason to believe that there are any inaccuracies or defects in information incorporated in this work, the County makes NO REPRESENTATIONS OF ANY KIND, INCLUDING, BUT NOT LIMITED TO, THE WARRANTIES OF MERCHANTABILITY OR FITNESS FOR A PARTICULAR USE, NOR ARE ANY SUCH WARRANTIES TO BE IMPLIED OR INFERRED, WITH RESPECT TO THE INFORMATION OR DATA FURNISHED HEREIN.

USED WITH PERMISSION OF THE LANCASTER COUNTY PLANNING COMMISSION.



LANCASTER COUNTY
 GEOGRAPHIC INFORMATION SYSTEM
 PLANNING COMMISSION